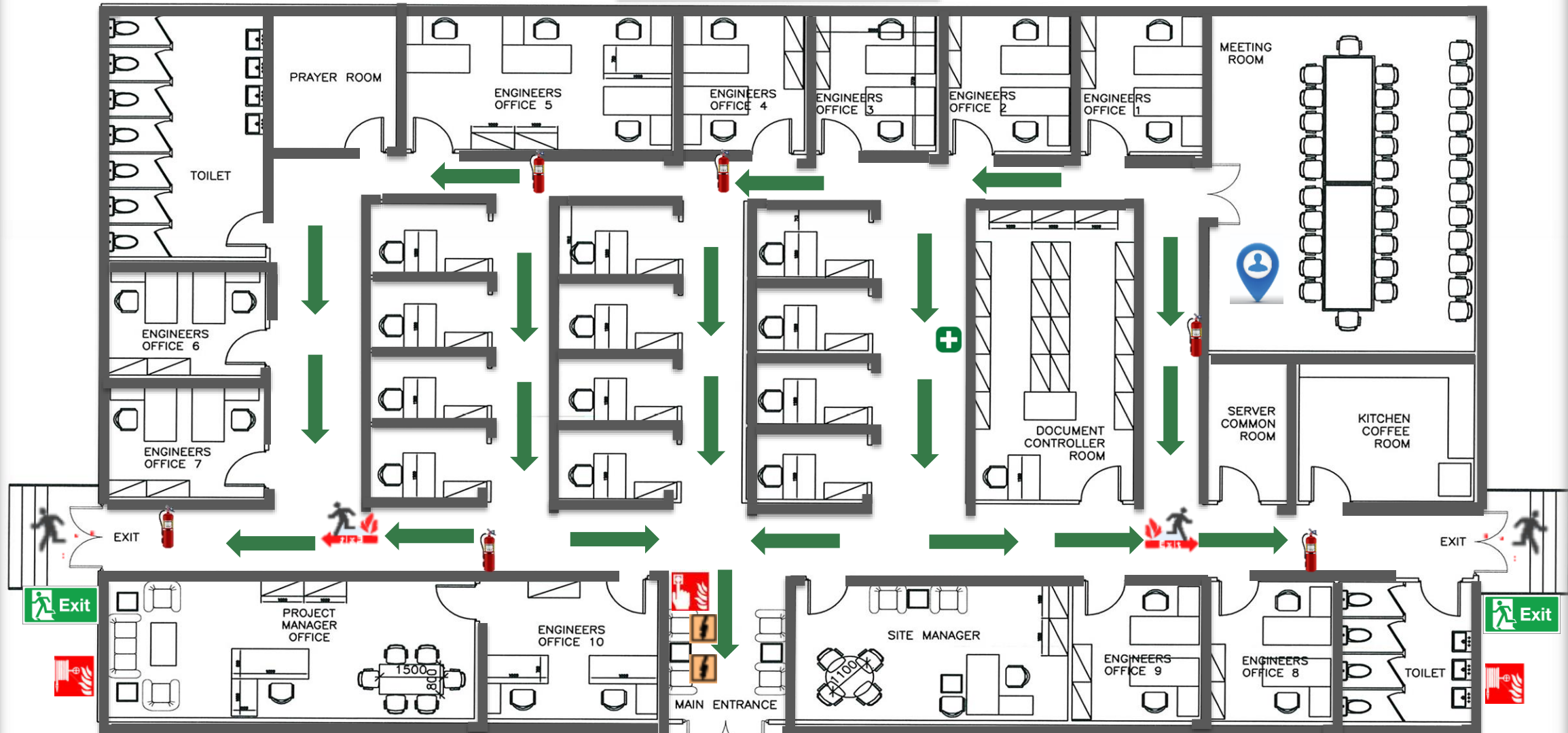


# Emergency Evacuation Plan

## Offices Area



**IN CASE OF FIRE  
PLEASE BE QUIET!**

**IN CASE OF ACCIDENT  
PLEASE BE QUIET!**

- 1- Notify the Fire Department By 111
- 2- Leave building Immediately following Exit signs
- 3- Proceed to the Assembly point following Exit routes

- 1- Notify the Fire Department By 111
- 2- Localize An Accident
- 3- Evacuate People following Exit signs

### Legend

- Portable Fire extinguisher
- Escape Routes
- Emergency Exit

- Fire Alarm Call Point
- Fire hose Reel
- Assembly Point

- First Aid Kit
- Electrical switch Board
- Your Are Here

